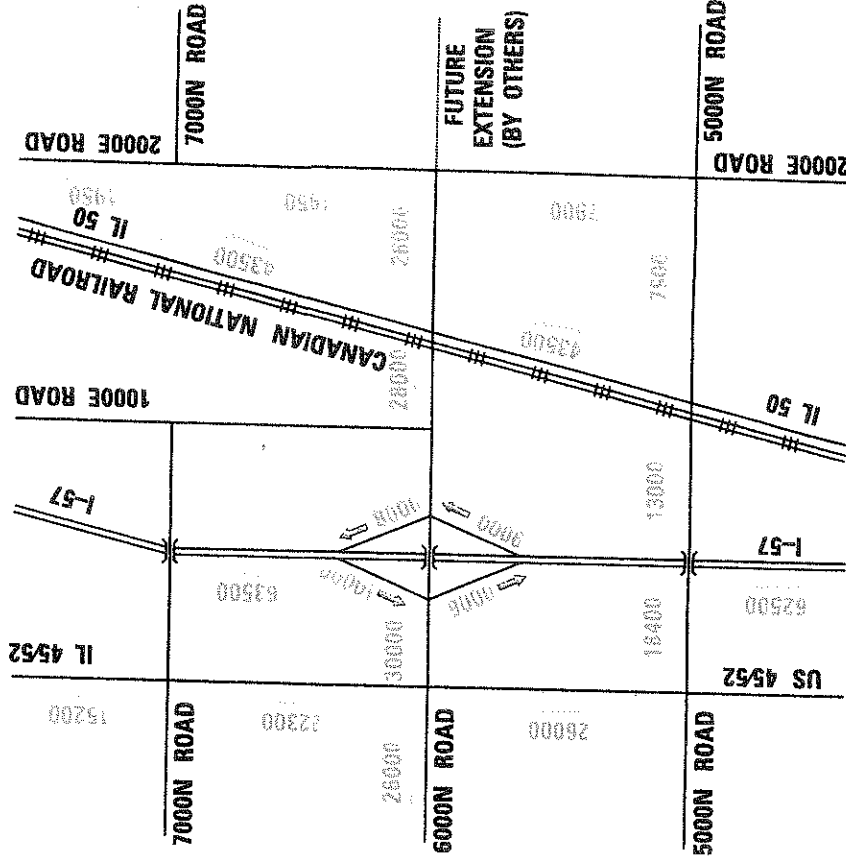
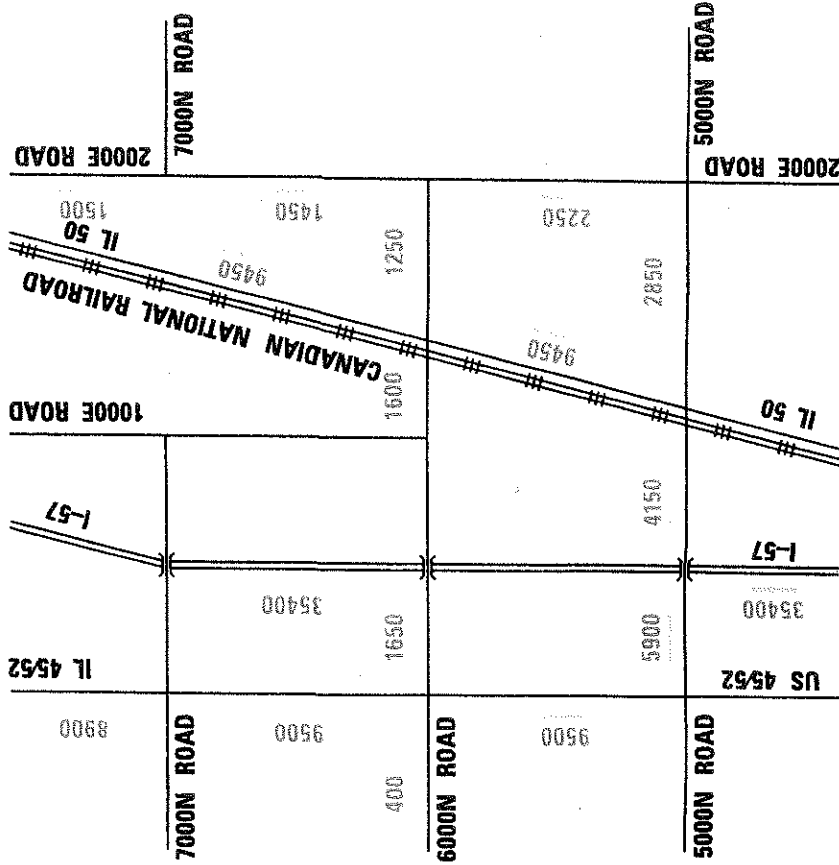


EXISTING CONDITION

PROPOSED CONDITION



**I-57 AT 6000N ROAD INTERCHANGE
TRAFFIC VOLUMES**



Illinois Department of Transportation

TYE INTERNATIONAL

NOT TO SCALE

DIRECTION OF TRAVEL
EXISTING (2005) AVERAGE
DAILY TRAFFIC

NEW RAMP
DIRECTION OF TRAVEL
2030 PROJECTED DAILY TRAFFIC
(BUILD ALTERNATIVE)

